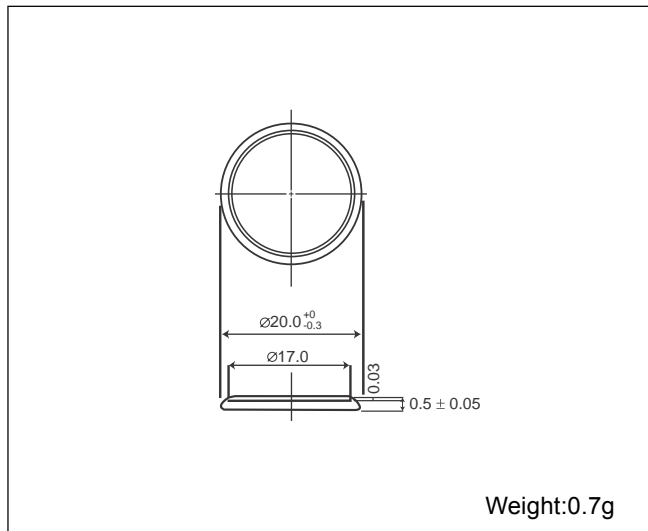


# Manganese Dioxide Lithium Coin Batteries: Individual Specifications

## CR2005(Under development)\*

### ■ Dimensions(mm)

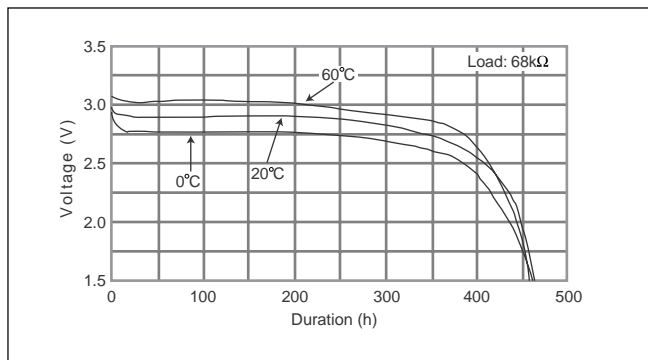


### ■ Specification

Nominal voltage (V)	3
Nominal capacity (mAh)	18
Continuous standard load (mA)	0.03
Operating temperature (C)	-30 ~ +60

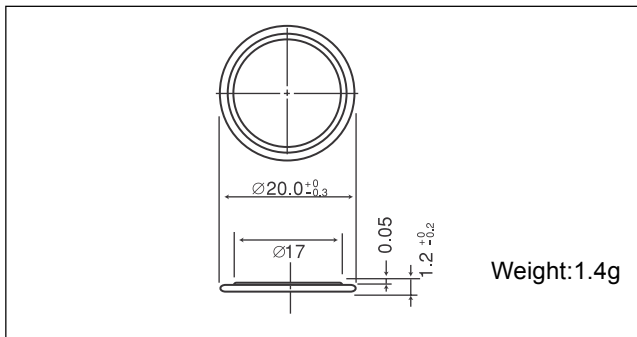
\* Please contact Panasonic for the latest information on this product.

### ■ Temperature Characteristics



## CR2012

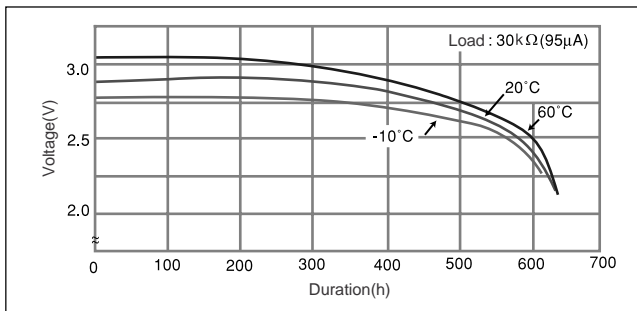
### ■ Dimensions(mm)



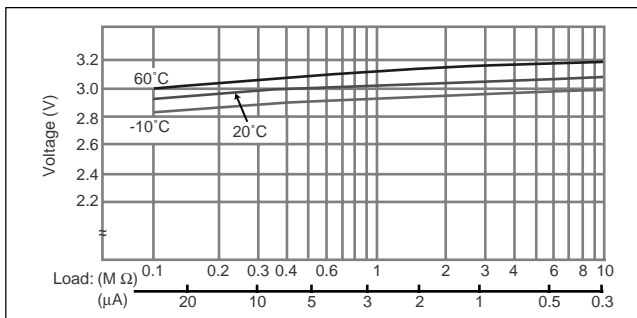
### ■ Specification

Nominal voltage (V)	3
Nominal capacity (mAh)	55
Continuous standard load (mA)	0.1
Operating temperature (C)	-30 ~ +60

### ■ Temperature Characteristics



### ■ Operating voltage vs. load resistance (voltage at 50% discharge depth)



### ■ Capacity vs. load resistance

